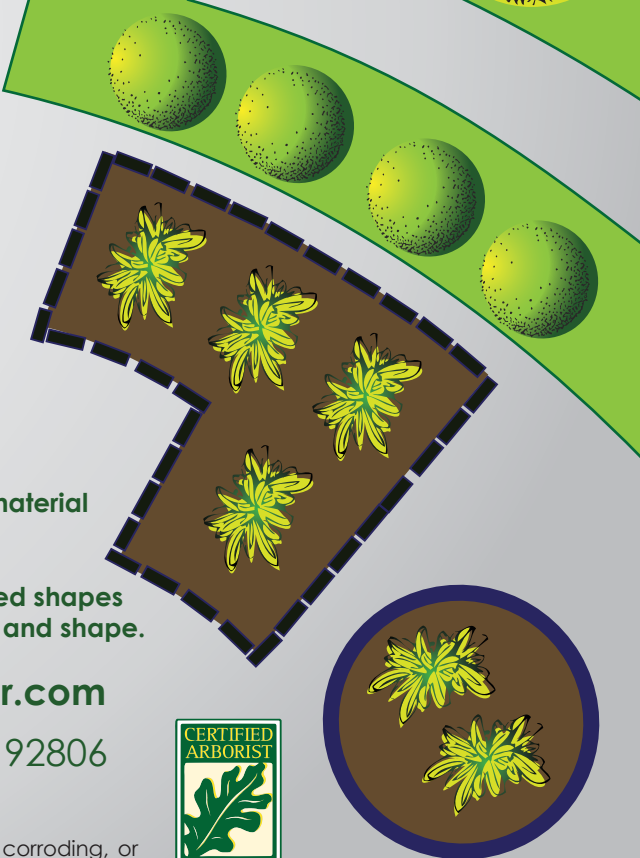




# Eco RAISED GARDEN BEDS



- Eco Raised Gardens Beds are simple to install – all you do is snap them together! No need for a hammer and nails! Installs in just minutes.
- Eco Raised Garden Beds are great for growing small plots of veggies and flowers. They keep weeds from your garden soil, prevent soil compaction, provide good drainage and serve as a barrier to pests.
- Eco Raised Garden Beds keep the soil level, Eco Raised Garden Beds also reduce back strain when bending over to tend the bed. This is especially helpful to seasoned gardeners or those with bad backs.
- Eco Raised Garden Beds are manufactured from durable Polyethylene material 100% Recycled - Eco Friendly - Non toxic and will never rot.
- Eco Raised Garden Beds are versatile panels will conform to many desired shapes and patterns allowing you to design and personalize your garden in size and shape.



Email: [info@crbtools.com](mailto:info@crbtools.com) • [www.centuryrootbarrier.com](http://www.centuryrootbarrier.com)

**Century Products** - 1144 N. Grove St. Anaheim, CA 92806

T: 714.632.7083 F: 714.632.5470

Century Products, Inc. products are warranted to be free from manufacturing defects resulting in delaminating, peeling, flaking, corroding, or cracking for a period of 30 years from the date of purchase. This warranty does not cover: (A) physical abuse, misuse, neglect, or improper storage. (B) Improper installation or installation contrary to the written Century Products, Inc. instructions. (C) Damage attributable to atmospheric pollutants, hail, lightning, hurricane, tornado, wind borne objects, earthquake, fire, mildew, casualty, act of God, building or ground settlement, or subjection to stress or weight. Century Products, Inc. will replace the material containing the defect less shipping costs. All claims must be made within 30 days after the defect was first discovered.



Endorsed By  
F. T. Smith  
WC-0913

**Vegetable Gardens • Flower Beds • Succulent Gardens • Cactus Garden • Herb Gardens • Compost Area • Kid's Sand Box**

